

Fabulous Fall

The mercury may be sinking, but effervescent colors and bold beauty are on the rise.

By Rachel Kossman

Ah, autumn: falling leaves, golden sunsets and crisp air. When the temperatures dip, the hues in nature, fashion and beauty begin to deepen. This fall, however, bright colors aren't *totally* disappearing as the transitional season arrives.

"Along with anchoring earth tones, exuberant pops of vibrant colors are appearing," notes Leatrice Eiseman, executive director of the Pantone Color Institute, referencing the 10 shades in Pantone's Fall 2016 Fashion Color Report. "These unexpectedly vivacious colors act as playful but structured departures from your more typical fall shades."

Those vivacious colors to which Eiseman refers: **Spicy Mustard**, a deep, zesty yellow; **Bodacious**, a bright, rich purple; **Aurora Red**, a warm, bold shade; and **Lush Meadow**, an elegant, fresh green. Two cool blues—**Riverside** and **Airy Blue**—lead the palette, which is rounded out by **Sharkskin** (a mid-tone gray), **Warm Taupe** (a timeless neutral), **Dusty Cedar** (a deep rose) and **Potter's Clay** (a russet orange). Brilliant, yet rooted in earthy, spa-friendly tones, these hues will be power players as your clients switch their sundresses for sweaters.

Seasonal colors and runway shows offer inspiration and avant-garde glam, but ultimately clients reach for products that best complement their skin tones. That makes it your job to meld the two by staying on top of the latest looks, and helping clients adapt those looks to their complexions.

"Makeup trends for Fall/Winter 2016 are all about bold beauty," notes Heather Nelson, Santa Clarita, CA-based makeup artist and owner of WAX by Heather Nelson. "Shimmery eyelids with strong eyelashes, flashes of sparkle and flawless, cherub-like skin were staples on the runways."

Simple, vibrant stains are on-trend for lip colors. "This season, it's all about a dark berry or bright red lip," says Natalie Soto-Carlisle, global educator for Jane Iredale. "What's great about fall is that if all you're wearing is a bold lip and mascara, it's beautiful and classic." New York City-based makeup artist Jamie Dorman notes that discovering the right color for your clients' lips will make all the difference. "The perfect shade of red will complement her skin tone and light up her whole face."



*“Graphic eyeliner is a perfect bold beauty statement:
It’s both tribal and artistic.”*

—Heather Nelson

Electric Eyes

Shimmery shadows lend themselves to beautiful twists on the smoky eye; dynamic, vivid liners create a more dramatic, artful look.



*“A metallic lid accentuates
and brightens the eyes, making
them appear bigger. Copper
and gold tones are flattering
on almost all skin types.”*

—Natalie Soto-Carlisle

- 1 Jane Iredale PurePressed Eye Shadow in Magic
- 2 Palladio Eyeliner in Electric Purple
- 3 Osmosis Colour Water Colors in Azure
- 4 Mineralogie Pressed Eye Shadow in Diamond Dust
- 5 Jane Iredale Gel Eyeliner in Green
- 6 Mineralogie Color Glaze in Gold Caviar
- 7 Susan Posnick Cosmetics ColorEyeDefine Liner/Shadow in Smokey/Rose Quartz

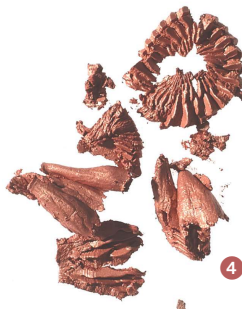
- 8 Brush Up With Barbara Kohl Eyeliner in Pacific Blue
- 9 Colorlab Cosmetics Mineral Eyeshadow in Sterling
- 10 Brushes by Karen Natural Pressed Eye Shadow in Copper Lights
- 11 Advanced Mineral Makeup Luminizer Cream Shadow in So-Beautiful Gold
- 12 Sormé Precision Duo Liquid Liner & Corrector in Black Brown

“ Use the rule of thumb: Avoid putting blush a literal thumb’s distance away from the nostril; it will age your clients. Instead, apply directly on the apple of the cheek for a youthful, healthy glow. ”

—Natalie Soto-Carlisle

Iridescent Complexions

Help your clients execute a light, luminous, slightly shimmery glow with blushes, bronzers and highlighters of all mediums and hues.



8

“ Shimmer blush looks best on smooth skin that has small pores and few wrinkles. Pair it with matte skin and skip the highlighter. ”

—Jamie Dorman, makeup artist

- 1 **Mirabella Brilliant Mineral Highlight Powder** in Shimmer Rose
- 2 **Mineralogie Duo Pressed Blush Compact** in Riviera and Veil
- 3 **Brush Up With Barbara Pressed Blush** in Shimmering Sand
- 4 **Youngblood Luminouse Crème Blush** in Tropical Glow

- 5 **Palladio Herbal Mosaic Powder** in Desert Rose
- 6 **Sormé Mineral Botanicals Blush** in Charisma
- 7 **Brushes by Karen Natural Pressed Blush** in Cinnabar
- 8 **Osmosis Colour Bronzer** in South Beach

“To stay on the right side of ‘goth glam,’ try a dark shade that has a little red or pink in it. Think berries, cherries and plums!”

—Heather Nelson

Power-statement Puckers

Bright red or vampy dark—a killer lip color is all your clients need to feel on-point this season.



“To make red lips pop, wear clean skin, and ditch bronzers and heavy blushes. It’s about the skin looking healthy and the lips looking full.”

—Natalie Soto-Carlisle

- 1 Mirabella Colour Vinyl Lipstick in Icy Violet
- 2 Mineralogie Mineral Matte Lipstick in Moroccan Spice
- 3 Youngblood Matte Lipstick in Sinful
- 4 Sothys USA Satin Lipstick in Rouge Intense

- 5 Colorlab Lipstick in Avant Garde
- 6 Osmosis Colour Lasting Lip Color in Sassy
- 7 Brush Up With Barbara Lipstick in Marooned
- 8 Mirabella Velvet Lip Pencil in Red

Rachel Kossman is DAYSPA’s senior editor.